



para los niños
for the children

PLN K-8 Re-Opening

2/25/2021

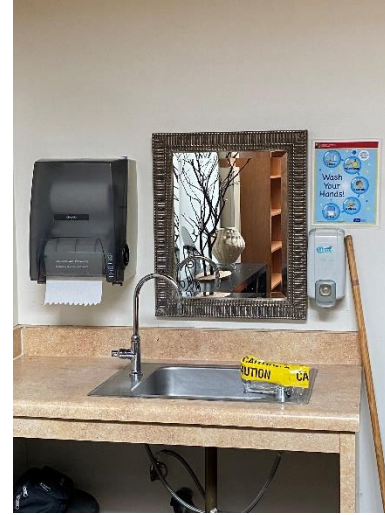
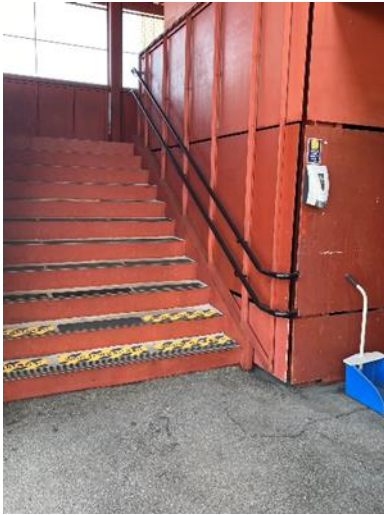
PLN Site Safety Protocols

- PPE :
 - Hand Sanitizer Stations throughout (in addition to free-standing bottles)
 - Gloves
 - Face Shields
 - Cloth and disposable face masks
 - Isolation kits
 - Thermometers, cones, rolling plex-glass for student screening
- Facilities :
 - Preventative Maintenance (PM) completed on HVAC systems, including replacing air filters
 - Disinfecting/Cleaning at sites daily; disinfecting solution will be available in each classroom and in other areas
 - Electrostatic sprayers procured and are ready for use by the night crews
 - Plexi glass has been installed in all reception areas and other locations where groups tend to gather
 - Outdoor and Indoor signage has been installed throughout the sites promoting social distancing, use of mask at all times, reminders of COVID symptoms.

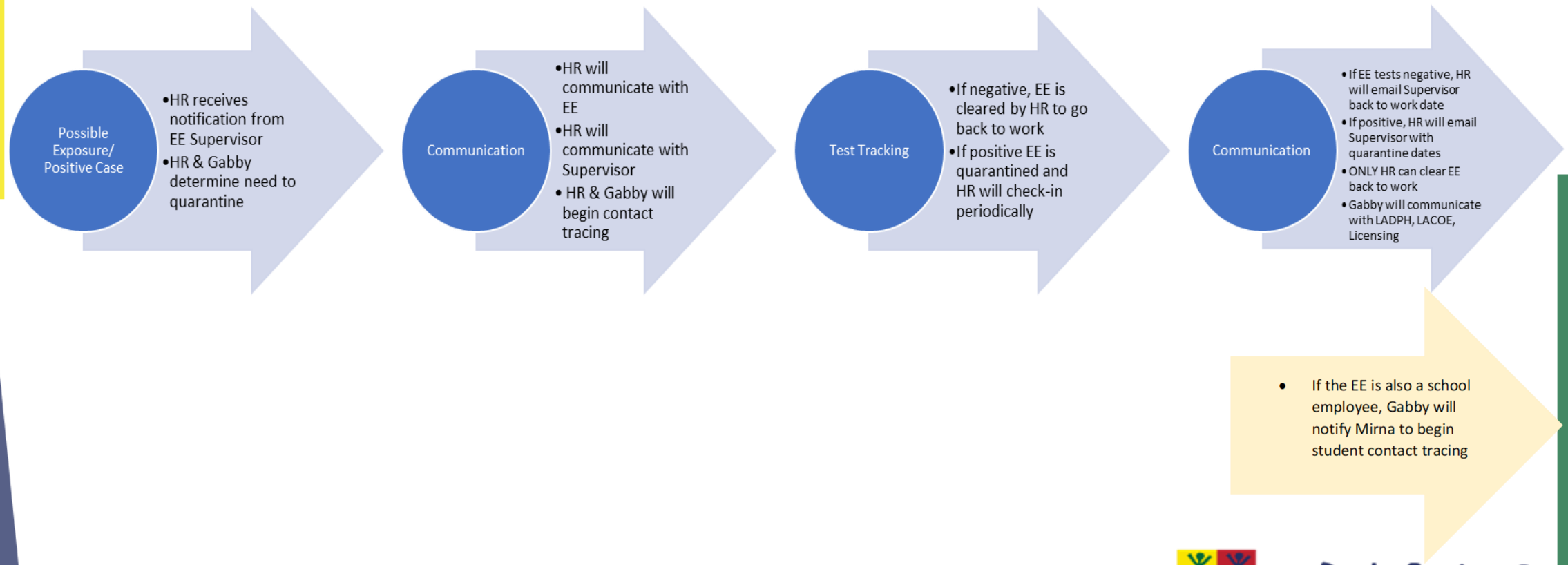
What is Already in Place to Keep You Safe



What is Already in Place to Keep You Safe



Notification Process



Reporting Possible Exposure Process

Possible Exposure/ Positive Case

- If student develops symptoms while at school, they are isolated and sent home.
- Site supervisor will contact Mirna re possible exposure.
- Mirna will provide Gabby with student information and Gabby will contact HR to start staff contact tracing
- Mirna and Gabby will determine which student cohort will need to be quarantined after consulting with LADPH.

Communication

- Gabby will call the VP/Principals to inform them of the exposure
- Mirna/Gabby will contact LADPH to determine whether the classroom(s) will need to be closed temporarily

Classroom/Site Closures

- If a closure of a classroom(s) is required by LADPH, Gabby will communicate with VP/Principals and Mirna will work with FSSs to communicate with families; office managers at schools will communicate with families
- If it is determined that the entire site will need to be closed*, VP/Principals will communicate with staff and Mirna will work with FSSs on family communication; office managers for schools.
- *only LADPH can make that call or for operational purposes, and after consulting with Operations, HR, & CEO, VP can make that determination

Requirements to Open Schools In-Person

Standards set by CA Dept of Public Health & L.A. County Dept of Public Health

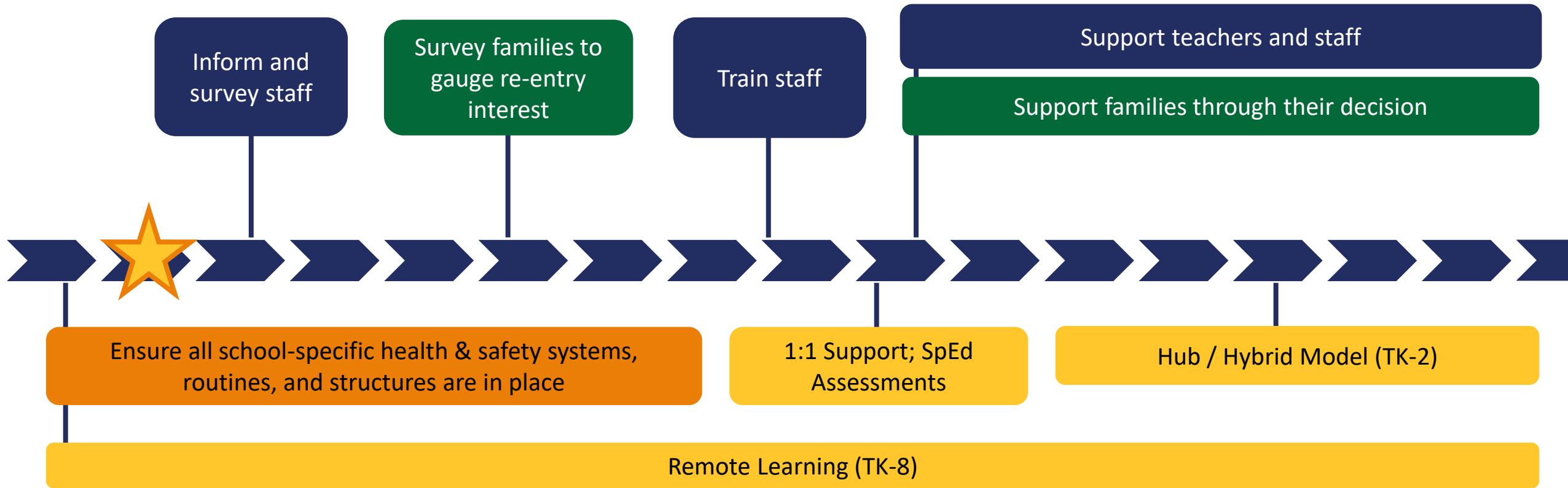
- **Criteria for Reopening In-Person**
 - Based on community spread data
 - Color-coded tier system for grades K-6 & 7-12
- **Cal/OSHA Prevention Program (CPP)**
 - Addresses COVID-19 health hazards, process for correcting unsafe or unhealthy conditions, including providing face coverings
 - Contains measures taken to prep site, keep students/staff/visitors safe, revised policies and procedures
 - Similar to the PLN Return to Work Guide developed Summer 2020 & includes info in the COVID-19 Safety Plan (CSP)
- **COVID Testing Considerations**
 - Testing should not be used as a stand-alone approach to prevent in-school transmission—it is part of a multi-pronged approach
 - PLN has signed a contract with Coverify to conduct weekly staff testing at 10 of our sites (start date TBD)
 - We recently received guidance from LAUSD about testing requirements for students and are working to assess its impact
- **Vaccines for K-12 Schools**
 - Phase 1B (March 1st) includes Education/Childcare (among others)
 - All formal and informal childcare workers, including day care providers
 - All staff in educational support services and administration
 - All staff in Pre-kindergarten, elementary, middle, and high schools
 - Any other workers involved in child and/or student care, including school bus drivers and monitors, crosswalk guards, etc.

Resources Available to Staff

We are in the process of developing a staff COVID resource page to include:

- Return To Work Plan
- COVID-19 Safety Plan
- Cal/OSHA Prevention Program
- PLN Testing Policy
- Daily Screener Questions
- Training Links
- FAQs (for testing and vaccine)
- Fact Sheets

Preparation Before Return to Campus



- Staff
- Families
- Instructional Model
- Facilities & Operations

Vaccines are an important part of this process. PLN is actively staying abreast of updates from CDC and LA County regarding testing and vaccinations and will share more information when it's available at a future town hall meeting.

Re-Entry Approach

I:I Assessments, Evaluations & Small Group Support

- Continuing what started in late 2020
- Preparing to provide in-person evaluations, assessments, and/or services by appointment and in a safe manner for select students who have IEPs.
- Will look to provide additional individual support to additional students if possible

We anticipate this beginning in the next several weeks.

Re-Entry Approach

Support Hubs

- Intended to provide additional in-person support and services for small cohorts of some of our most vulnerable students.
- Students participate in remote model, but from PLN sites
- Provides consistent environment with reliable internet access, additional staff support and opportunity to offer additional services.

We anticipate these will start (in a limited fashion) in the next several weeks.

Re-Entry Approach

In-person Direct Instruction

- Self-contained small cohorts of students, learning directly from teachers on campus.
- Beginning with TK-2nd grade
- Remainder of the students would continue with the remote learning model.
- These groups would be assembled after assessing staff availability and student/family interest.
- Based on county guidance and our own experience, we will explore the opportunity to expand these to other grades, if possible.

We anticipate that this will begin in April.

Re-Entry Approach

Hybrid Model

- Staggered campus access with students also in remote model
 - Given current public health requirements, all students could not be on campus simultaneously
- We also expect that some families will choose to continue with fully remote instruction

Re-Entry Approach

Summer and next school year

- Working on summer program design
- Some may be remote
- Preparing to open next school year with as many possible models in mind – fully in-person, fully remote, hybrid, etc.

Covid-19 Task Force

Name	Role	Email
Gabby Herrera	Compliance Officer	gherrera@paralosninos.org
Sarah Figueroa-Freeman	Operations	sfigueroa@paralosninos.org
Deanette Brewer	Human Resources	dbrewer@paralosninos.org
Mayra Flores	Human Resources	mflores@paralosninos.org

Over the last year, the COVID-19 Task Force has:

- Lead contact tracing
 - Participated in weekly LADPH calls
- Developed new protocols and procedures
- Managed communication to staff/families
- Made adjustments based on learnings



PaRa los niños
for the children



Questions?